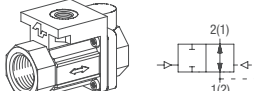


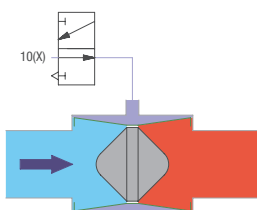
2/2-Way Solenoid Valve with Pressure Regulator - Type EGR Series 300

2/2-Way Valve - Type PGV Series 300 - Pressure Operated (Volume Booster) by External Medium

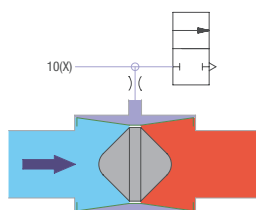
Product group	53	Function "B" normally open (without control pressure)	low noise and impact-free closing, for neutral, gaseous and fluids						Brass		
Version			Control pressure [bar]	DN	Kv-value water [m³/h]	G	PN	Sealing material	Type	Order number	Price
	2/2-way valve pressure operated, double-sided blocking by external medium		≥ excess operating pressure max. 16 bar	13	3.2	G 1/2	16	NBR	PGV-331-B76-1/2BP	614101	o. r.
	Permitted operating pressure 0.3 to 16 bar			13	3.2	G 1/2	16	EPDM	PGV-331-B76-1/2PP	614103	o. r.
				13	3.2	G 1/2	16	FKM	PGV-331-B76-1/2FP	614105	o. r.

Illustration

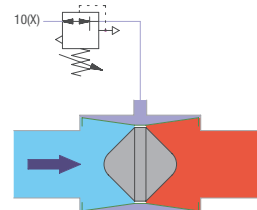
Remotely operated 2/2-way valve regulated by external medium with 3/2-way valve (positive control)



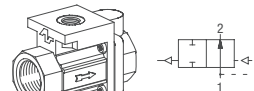
Remotely operated 2/2-way valve regulated by external medium with 2/2-way valve



Remotely operated excess pressure valve regulated by external medium with pressure regulator

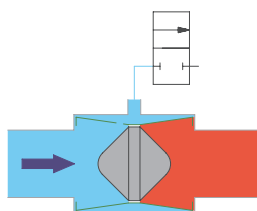


2/2-Way Valve - Type PGV Series 300 - Pressure Operated (Volume Booster) by own Medium

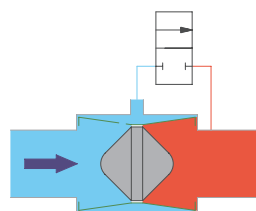
Product group	53	Function "B" normally open (without control pressure)	low noise and impact-free closing, for neutral, gaseous and fluids						Brass		
Version			Control pressure [bar]	DN	Kv-value water [m³/h]	G	PN	Sealing material	Type	Order number	Price
	2/2-way valve pressure operated by own medium	Permitted operating pressure 0.3 to 16 bar	≥ excess operating pressure max. 16 bar	13	3.2	G 1/2	16	NBR	PGV-331-B76-1/2BN	614151	o. r.
	13			3.2	G 1/2	16	EPDM	PGV-331-B76-1/2PN	614153	o. r.	
	13			3.2	G 1/2	16	FKM	PGV-331-B76-1/2FN	614155	o. r.	

Illustration

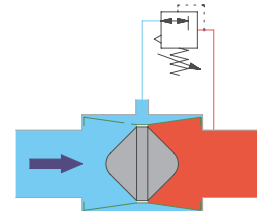
Remotely operated 2/2-way valve regulated by own medium with 2/2-way valve (negative control)



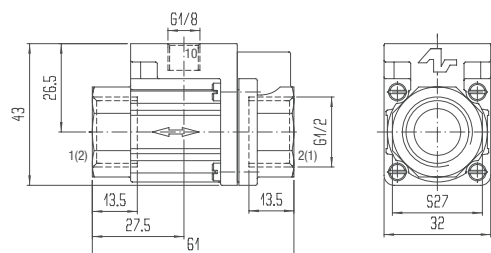
Remotely operated 2/2-way valve regulated by own medium with 2/2-way valve (control medium recycled)



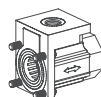
Remotely operated pressure regulator valve regulated by own medium with pressure regulator (control medium recycled)



Illustration

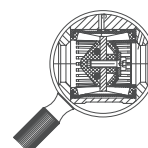


Variations



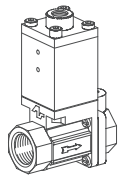
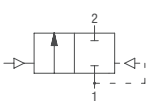
2/2-way flange mount valve (only external medium vers.)
Flange-side or thread-side pressure inlet
Type PGV-331-BH7-.....

Options

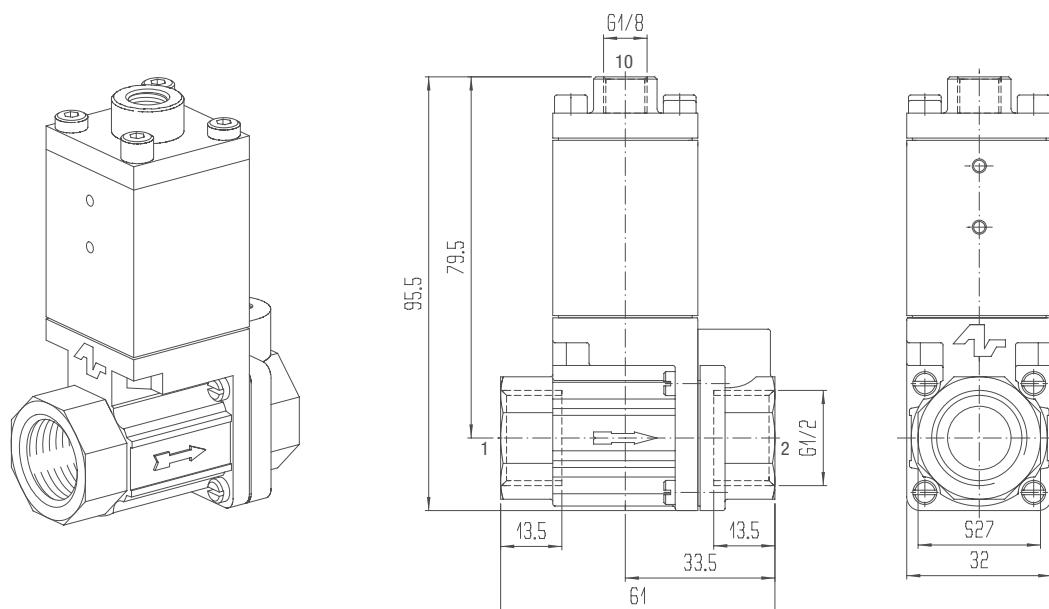


0-pressure membrane, requires no differential pressure to open, however control pressure to close 1 bar above operating pressure
Type PGV-331-B76-../.0

2/2-Way Valve - Type PGV Series 300 - Pressure Operated

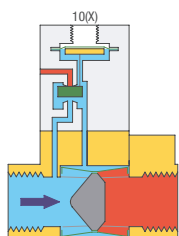
Product group	53	Function "A" normally closed	low noise functioning, for gaseous medium, especially compressed air								Brass	
Version			Control pressure [bar]	DN	Flow air [Nm³/h]	G	PN	Sealing material	Type	Order number	Price	
 		2/2-way valve pressure-operated by maintained compressed air Permitted operating pressure 0.3 to 16 bar	4-7	13	3.2	G 1/2	16	NBR	PGV-351-A96-1/2BP	614181	o. r.	

Illustration

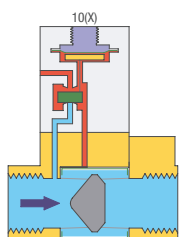


These servo controlled valves with pneumatic override are used in the control of compressed air, e.g. for the purposes of explosion protection, where solenoid valves are not desirable.

Function

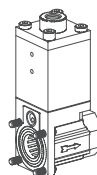


In 0-position - pre-control valve not pressurised - its seat is closed. Pressure thus builds up in the control chamber, which due to the larger effective membrane surface holds the membrane in "closed" position.

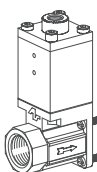


In override position - pre-control valve pressurised - its override seat is closed. The control chamber is released by the open seat, and the membrane is held in "open" position by the flow medium. A minimum pressure difference is required for this.

Variations

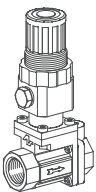
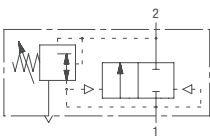


2/2-way flange mount valve
Flange-side pressure inlet
Type PGV-351-.AL7-1/2BP

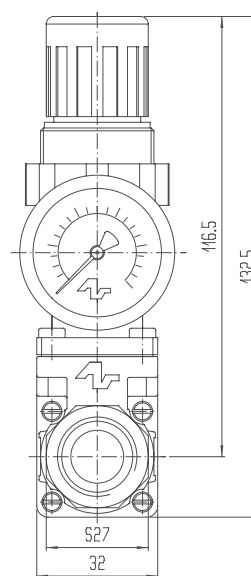
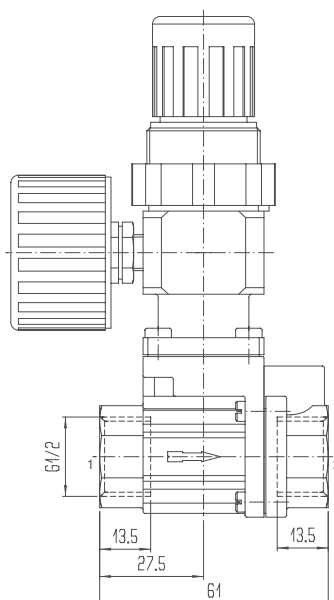
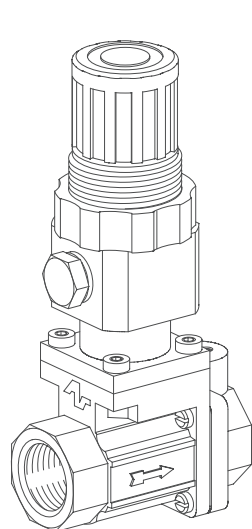


2/2-way flange mount valve
Thread-side pressure inlet
Type PGV-351-.A9H-1/2BP

Pressure Regulator Valve - Type RGV Series 300

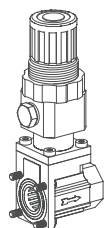
Product group 53	with secondary side ventilation	low noise and impact-free control, for neutral, gaseous medium (optional fluids)	Brass							
Version		Secondary pressure [bar]	DN	Flow air [l/min]	G	PN	Sealing material	Type	Order number	Price
 	Pressure regulator valve without pressure gauge Permitted operating pressure 0.5 bar up to 16 bar	0.5 - 10	13	150 to 1,500	G 1/2	16	NBR	RGV-351-1C78-1/2BN	653001	o. r.
		0.5 - 3	13	150 to 1,500	G 1/2	16	NBR	RGV-351-3C78-1/2BN	653002	o. r.
		0.5 - 6	13	150 to 1,500	G 1/2	16	NBR	RGV-351-6C78-1/2BN	653003	o. r.

Illustration

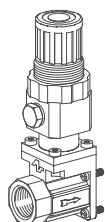


Pilot unit can be assembled rotated by 4x90°.

Variations



Flange mount
Pressure regulator valve
Flange-side pressure inlet
Type RGV-351-.CH9-....

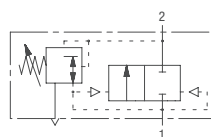


Flange mount
Pressure regulator valve
Thread-side pressure inlet
Type RGV-351-.C7L-....

Options


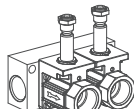
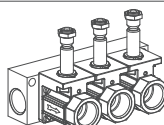


increases resistance to corrosion, and replaces stainless steel valves cost-effectively stainless steel pressure regulator Type RGV-351Q-...

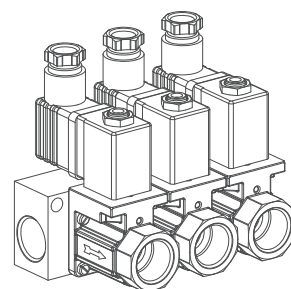
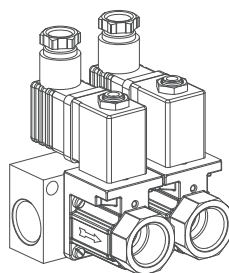
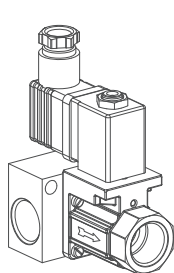
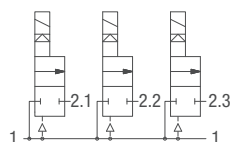


without secondary side ventilation of the pilot pressure regulator, especially for fluids
Type RGV-351-.A78-...

2/2-Way Solenoid Valve Battery - Type EGV Series 300

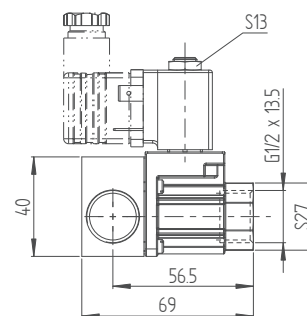
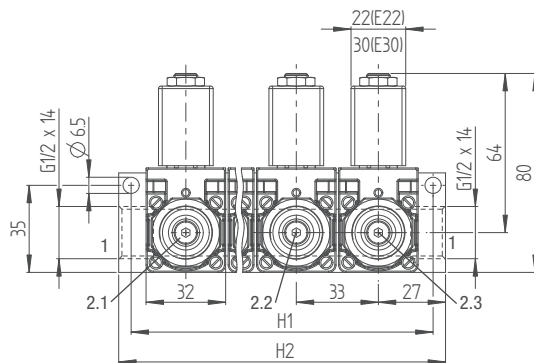
Product group	53	Function "A" normally closed, distributor version	low noise and impact-free closing, for neutral, gaseous or fluids					Brass		
Version		DN	Kv-value water [m³/h]	G	PN	Possible type of power	Sealing material	Type	Order number	Price
	Valve without solenoid coil Permitted operating pressure 0.3 bar up to value according to table below.	13	3.2	G 1/2	16/8	AC/DC	NBR	EGV-311/V1-AH9-1/2BN-00	616801	o. r.
		13	3.2	G 1/2	16/8	AC/DC	EPDM	EGV-311/V1-AH9-1/2PN-00	616831	o. r.
		13	3.2	G 1/2	16/8	AC/DC	FKM	EGV-311/V1-AH9-1/2FN-00	616861	o. r.
	Valve, 2-fold Battery or solenoid coil Permitted operating pressure 0.3 bar up to value according to table below.	13	3.2	G 1/2	16/8	AC/DC	NBR	EGV-311/V2-AH9-1/2BN-00	616802	o. r.
		13	3.2	G 1/2	16/8	AC/DC	EPDM	EGV-311/V2-AH9-1/2PN-00	616832	o. r.
		13	3.2	G 1/2	16/8	AC/DC	FKM	EGV-311/V2-AH9-1/2FN-00	616862	o. r.
	Valve, 3-fold Battery or solenoid coil Permitted operating pressure 0.3 bar up to value according to table below.	13	3.2	G 1/2	16/8	AC/DC	NBR	EGV-311/V3-AH9-1/2BN-00	616803	o. r.
		13	3.2	G 1/2	16/8	AC/DC	EPDM	EGV-311/V3-AH9-1/2PN-00	616833	o. r.
		13	3.2	G 1/2	16/8	AC/DC	FKM	EGV-311/V3-AH9-1/2FN-00	616863	o. r.

Illustration



Valve Version

Description	H1	H2
Single valve	44	54
2-fold battery	77	87
3-fold battery	110	120
4-fold battery	143	153
5-fold battery	176	186
6-fold battery	209	219
7-fold battery	242	252
8-fold battery	275	285
9-fold battery	308	318
10-fold battery	341	351



Valve batteries series 300 can also be delivered at short notice in 4- to 10-fold version

Valve batteries series 100 can also be constructed combined, with all valve Types, for all listed functions and with various options according to customer requirements.

Solenoid valves, with pressure regulator, pressure operated valves or pressure regulator valves, can thus be flange-mounted on a collector plate according to requirement, or also opposite laterally reversed. Likewise the flow direction of the flange valves can be freely selected to a large extent. (Distributor or mixer version)

AVS-Römer furthermore manufactures so-called multi-functional blocks, with integrated injectors, pressure sensors and such like.

Permitted Operating Pressure OP

DN	Type	PN	Combinable solenoid coil			Permitted Operating Pressure OP [bar] at ambient temperature + 60 °C												
			Type	Nominal power P ₂₀			AC 50 Hz			AC 60 Hz			DC			DC		
				AC 50 Hz [VA]	AC 60 Hz [VA]	DC [W]	90 % U _N			90 % U _N			90 % U _N			100 % U _N		
				on req.	on req.	on req.	60 °C	90 °C	130 °C	60 °C	90 °C	130 °C	60 °C	90 °C	130 °C	60 °C	90 °C	130 °C
13	EGV-311/V-A..	16/8	E22...L. E22...M. E22...H. E30...P.	3.5 5.5 - 12	on req. 5 - 10.5	2.5 5 8 8	on req. 16 - 16	on req. 16 - 16	on req. 16 - 16	on req. 16 - 16	on req. 16 - 16	on req. 16 - 16	6 16 16	5 16 16	4 14 16	4 12 16	3 10 16	2 8 16

