

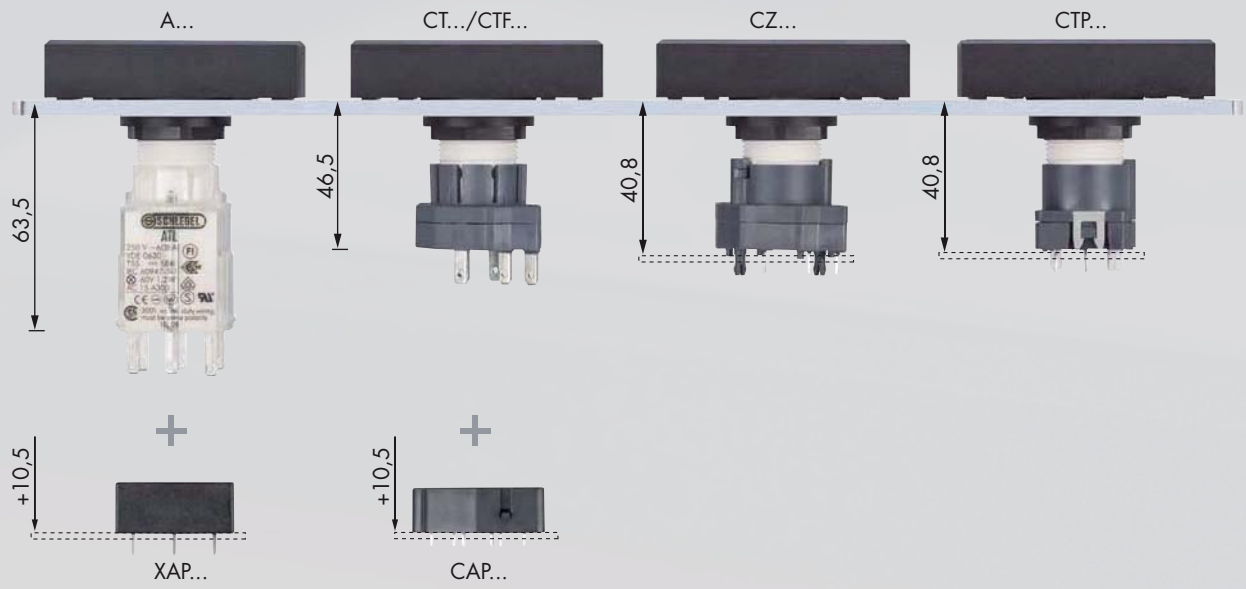


Front dimensions: 50 x 25 mm  
Panel cut-out: Ø 16 mm  
Front bezel height: 12 mm  
Travel: 6 mm

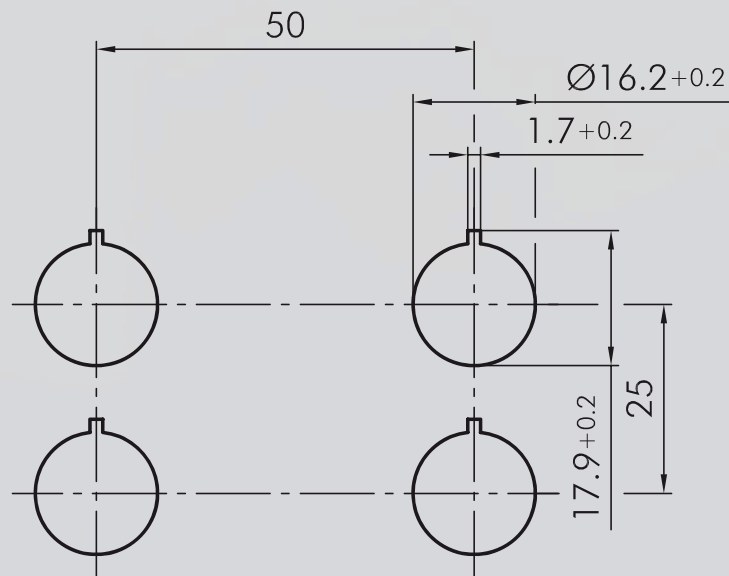


# QUARTRON-L

## Mounting Depth Dimensions



## Cutout Dimensions



	LXD	LXL5	LXN	LXT
AF				●
AF2				●
AFL				●
AFL2				●
AL5			●	
AL5-220			●	
AT				●
AT2				●
ATI				●
ATL				●
ATL2				●
ATO				●
AZ011_97				●
AZ2				●
AZOO				○
AZOW1				○
CL			●	
CLP_485			●	
CT	●			○
CT2	●			○
CTF	●			○
CTL	●			○
CTL2	●			○
CTLF	●			○
CTLP_485	●			○
CTP_485	●			○
CZLP			●	
CZTLP	●			○
CZTLP2	●			○
CZTP	●			○
CZTP2	●			○
L5			●	
PTFOI	●			○
PTFOO	●			○
PTPOI	●			○
PTPOO	●			○

- possible combination
- optimal combination

# QUARTRON-L

Ø 16 mm

## Pushbutton Heads (momentary/push-push)

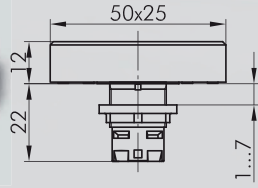
Lenses and nameplates to be ordered separately

Illustration

Dimensions

Description

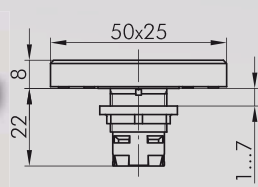
Type



### Pushbutton Head

front bezel  
black  
charcoal

**LXT**  
**LXTDG**



### Short-stroke Pushbutton Head

front bezel  
black

**LXD**



### Concave Lens, transparent

available in blue-BL, yellow-GB, green-GN, clear-KL, red-RT, opalwhite-WS, add code letter to type number, e.g. T50DBL

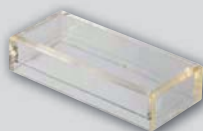
**T50D...**



### Flat Lens, transparent

available in blue-BL, yellow-GB, green-GN, clear-KL, red-RT, opalwhite-WS, add code letter to type number, e.g. T50FBL

**T50F...**



### High Lens, transparent

available in blue-BL, yellow-GB, green-GN, clear-KL, red-RT, opalwhite-WS, add code letter to type number, e.g. T50HBL

**T50H...**

IP67





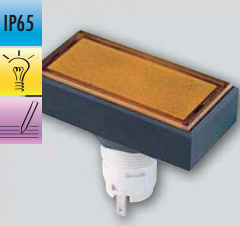
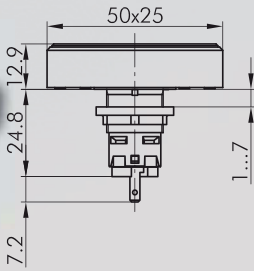

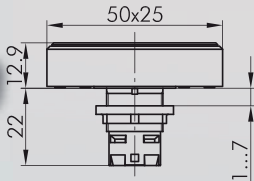
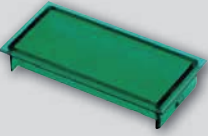

### Sealing Cap

made of silicone rubber, down to -50°C

**TK50S**

## Pilot Light Heads/Pilot Lights

Lenses and nameplates to be ordered separately

Illustration	Dimensions	Description	Type
		<b>Nameplate</b> with standard imprint, please specify index number (see nameplates)	<b>BSLX...</b>
		<b>Nameplate</b> with special imprint according to customer's specifications	<b>BSLXB</b>
		<b>Blank Nameplate</b>	<b>BSLXU</b>
 		<b>Pilot Light with Faston terminals 2.8x0.8 mm</b> T5,5K socket front bezel	black charcoal  <b>LXL5</b> <b>LXL5DG</b>
 		<b>Pilot Light Head 25 x 50 mm</b> front bezel	black charcoal  <b>LXN</b> <b>LXNDG</b>
		<b>Flat Lens, depolished</b> available in blue-BL, yellow-GB, green-GN, clear-KL, red-RT, opalwhite-WS, add code letter to type number, e.g. KF50BL	<b>KF50...</b>
		<b>Flat Lens, transparent</b> available in blue-BL, yellow-GB, green-GN, clear-KL, red-RT, opalwhite-WS, add code letter to type number, e.g. KF50KSBL	<b>KF50KS...</b>

Index  
 About Us  
 Control Units  
 Actuators  
 Bus Technology  
 Enclosures  
 Limit Switches  
 Pedal Switches  
 Terminal Blocks

# QUARTRON-L

Ø 16 mm



## Accessories for Actuators

Illustration

Dimensions

Description

Type



### Nameplate

with standard imprint, please specify index number (see nameplates)

**BSLX...**

### Nameplate

with special imprint according to customer's specifications

**BSLXB**



### Blank Nameplate

**BSLXU**

Index

About Us

Control Units

Actuators

Bus Technology





Enclosures

Limit Switches

Pedal Switches

Terminal Blocks

## Accessories for Actuators

Illustration	Dimensions	Description	Type
		<b>Hexagonal Mounting Tool</b> with torque limitation, for the series OKTRON, OKTRON-JUWEL, OKTRON-R, RONTRON-R-JUWEL, RONTRON-R- Exclusive, RONTRON-Q-JUWEL, RONTRON-Q- Exclusive, QUARTRON(-L), QUARTRON-JUWEL(-L), RX, RX-JUWEL	<b>S16</b>
		<b>Mounting Tool Adapter with 1/4\" connections</b> for mounting tools S16 and S22	<b>SRA</b>
		<b>Lamp Remover</b>	<b>LZ-MG</b>
		<b>Universal Lens Remover</b>	<b>USK</b>